

Legend

- Chainage Point
- Chainage Line
- TMC_BOUNDARY
- Sectors
- Waterbodies
- ★ Land Marks
- Roads



THANE MUNICIPAL CORPORATION
DRAFT URBAN RENEWAL SCHEME
(Prepared under the mandate of URS Notification No. TPS/12/15/2726/CR-24/4/UD-12 dated-5/7/2017)

Map Title: **URBAN RENEWAL PLAN PLANNING BOUNDARY**

URP No: **27** URP Name: **Rammaruti Nagar**

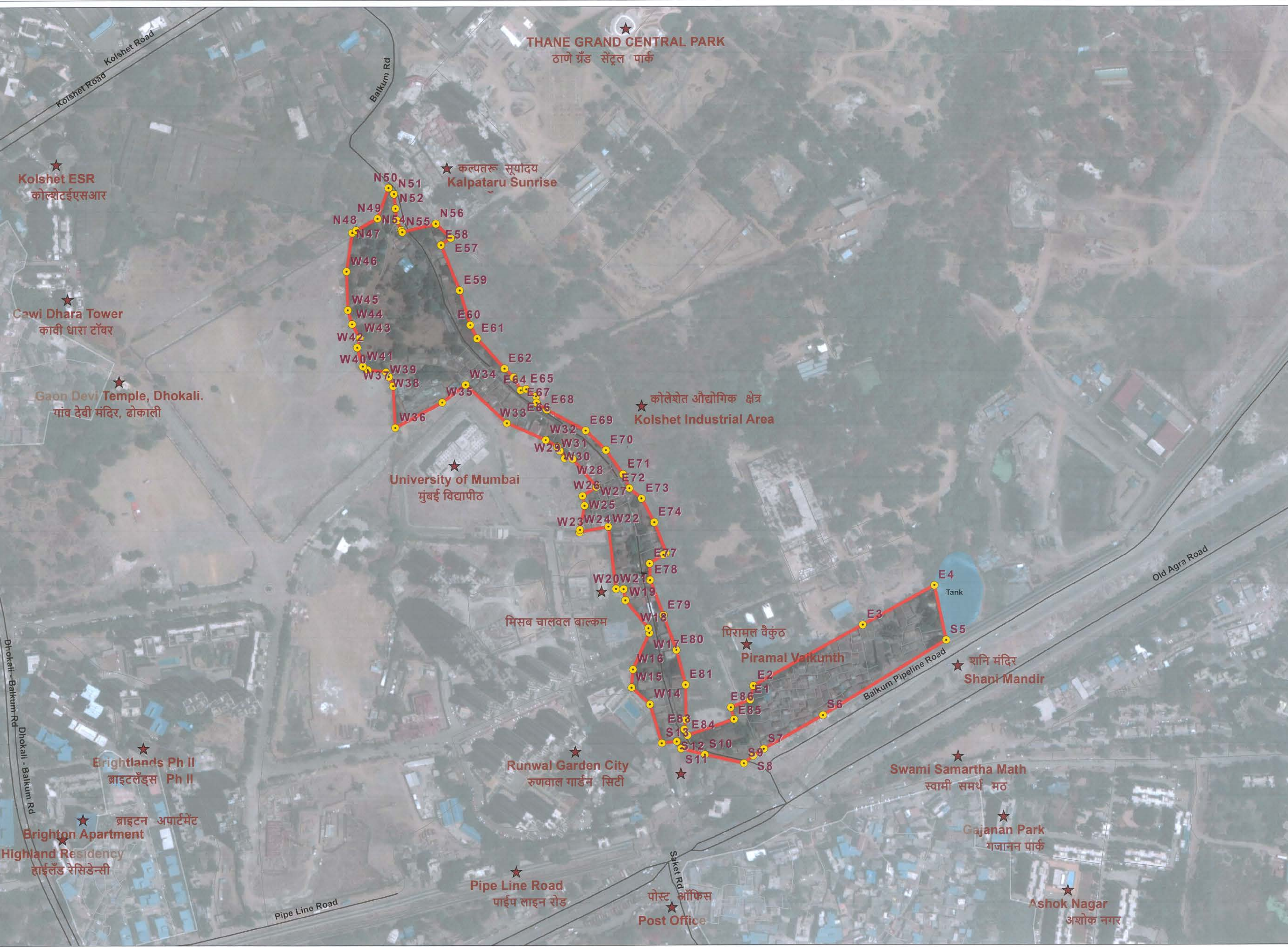
Scale: 1:2,000 Date: _____

0 25 50 100 Meters

Assistant Director of Town Planning TMC
 Municipal Commissioner

27 APR 2018

Source: 1. Aerial Image (2014) 2. Field Survey (2017-2018) 3. Sanctioned DP (2003) 4. Base Map (2007) 5. Google Reference Imageries (2017-2018)



URP 27: Rammaruti Nagar

: राममारुती नगर

Sector No. 5
 Area of URP: 6Ha

Boundary Details

From	TO	Length	ATTRIBUTE
N51 10°13'22.74"N 72°59'31.17"E	N51 10°13'40.74"N 72°59'31.17"E	0.91 Km	रुणवाल सीती पासून उतरेकडे बालकूम रोड लागत च्या वस्ती अंतर्भूत करत
N51 10°13'22.74"N 72°59'31.17"E	E82 10°13'21.74"N 72°59'22.17"E	0.80 Km	पिरामल कॉम्प्लेक्स लागत
E82 10°13'21.74"N 72°59'22.17"E	E4 10°13'26.74"N 72°59'32.17"E	0.35 Km	पिरामल कॉम्प्लेक्स ते तलाव पर्यंत
E4 10°13'26.74"N 72°59'32.17"E	E4 10°13'26.74"N 72°59'32.17"E	0.06 Km	तलाव पासून रुणवाल पर्यंत वस्ती अंतर्भूत

Stamp of Approval :